

**307/100 De Burgh Street Lyneham ACT**

2 2 2

Apply Link to be provided.

Perfectly positioned less than 3km north of Canberra's CBD, The Sullivan at Northbourne Village delivers city life at its best.

Work-life balance is a given. With transport at your front door and expansive parklands behind, you don't have to choose between livelihood and lifestyle.

Features:

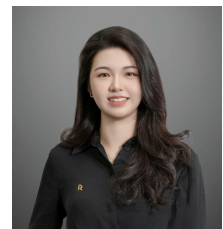
- Brand new
- 2 bedroom 2 bathroom 2 parking space

[For full version visit the website](https://www.ruizproperty.com.au)

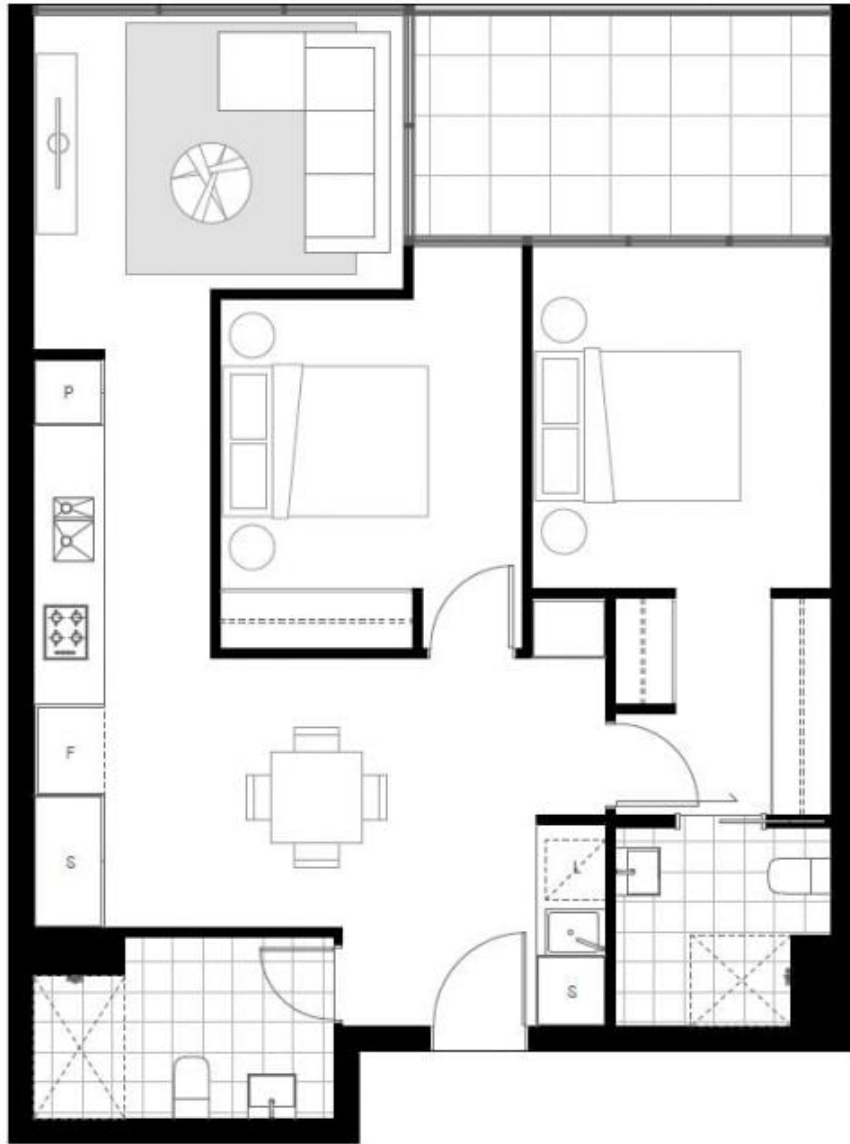
**Type** : Apartment  
**Price** : \$710 pw  
**Building Size** : 88 sqm  
**View** : <https://www.ruizproperty.com.au/lease/act/inner-north/lyneham/residential/apartment/8153084>



**Gloria Luo**  
0402 267 667



**Khloe Zhang**  
0492 947 050



LEGEND  
 F - Fridge  
 L - Laundry  
 S - Storage  
 P - Pantry

UNIT NUMBER  
 UNIT NO. 44  
 UNIT NO. 88  
 UNIT NO. 88  
 Grand total 3

