

## 207/100 De Burgh Street Lyneham ACT

2  2  2 

Perfectly positioned less than 3km north of Canberra's CBD, The Sullivan at Northbourne Village delivers city life at its best.

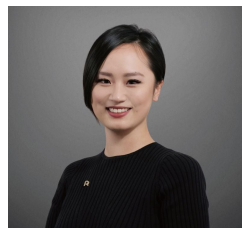
Work-life balance is a given. With transport at your front door and expansive parklands behind, you don't have to choose between livelihood and lifestyle.

### Features:

- 2 bedroom 2 bathroom 2 parking space
- Fisher & Paykel kitchen appliances, including induction cooktop
- Externally ducted range hood system
- Ducted reverse cycle air conditioning in all rooms
- Reconstituted stone bench tops, soft close drawers

[For full version visit the website](https://www.ruizproperty.com.au)

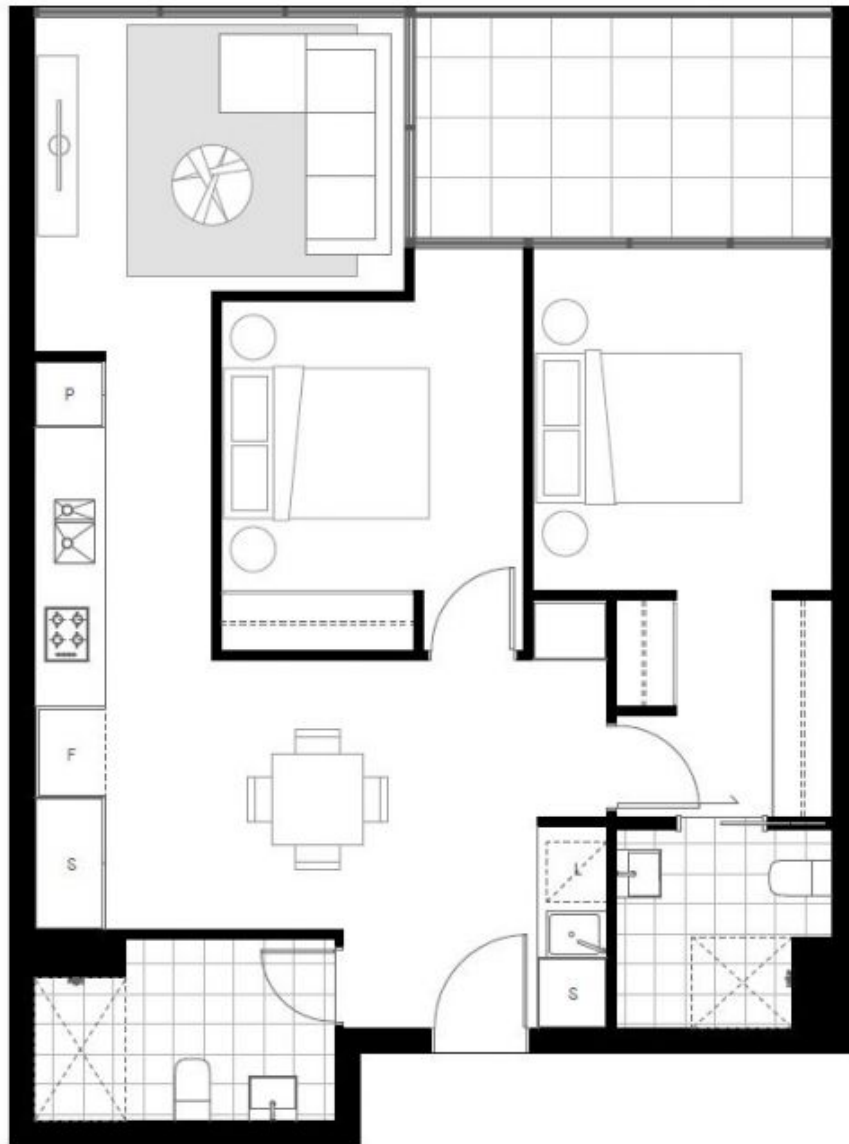
**Type** : Apartment  
**Building Size** : 88 sqm  
**View** : <https://www.ruizproperty.com.au/lease/act/inner-north/lyneham/residential/apartment/8039846>



**Kaylee Wang**  
0421 668 067



**Gloria Luo**  
0402 267 667



LEGEND

F - Fridge  
L - Laundry  
S - Storage  
P - Pantry

UNIT NUMBERS
UNIT NO. 41
UNIT NO. 42
UNIT NO. 43
Grand total: 3

