



204/1 Boolee Street Reid ACT

2 2 1

AVAILABLE EARLY JAN 2024

Located in the heart of Canberra, an unparalleled living experience awaits you.

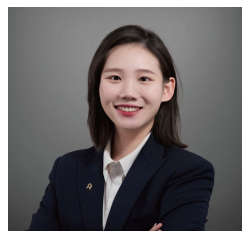
This apartment is situated in the Metropol development, renowned for its contemporary design and luxurious ambience. Step into this spacious 2-bedroom, 2-bathroom apartment, and you'll immediately notice the high-quality craftsmanship and stunning architectural features. The bright open-plan living area allows you to enjoy abundant natural light, creating a bright and inviting indoor environment.

Metropol is not just a great place to live; it also offers

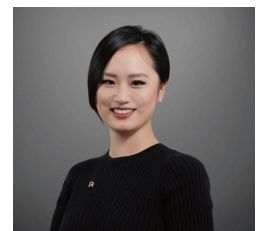
[For full version visit the website](#)

Type : Apartment

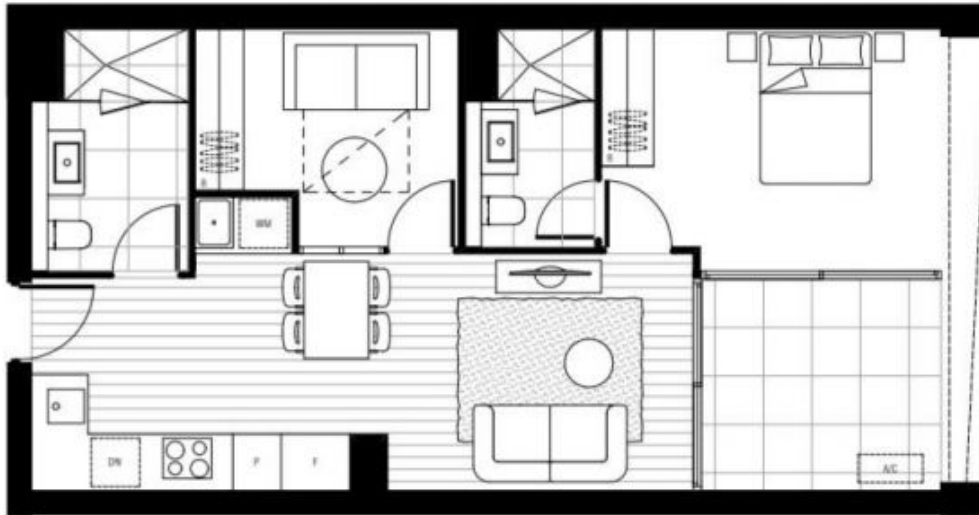
View : <https://www.ruizproperty.com.au/lease/act/inner-north/reid/residential/apartment/7855861>



Gloria Luo
02 6109 7667



Kaylee Wang
02 6109 7667

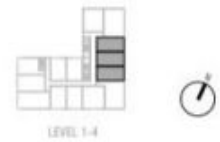


APT TYPE TB-1B
ADAPTABLE

INTERNAL AREA: 62 M²
EXTERNAL AREA: 8 M²
TOTAL AREA: 70 M²

APPLICABLE TO UNITS:

103 , 104 , 105 , 203 , 204 , 205 , 303 , 304 , 305 ,
403 , 404 , 405 ,



DWG NO	DWG TITLE	REVISION	DATE
MK2-101	APT TYPE TB-1B	REV. -	02.08.2018



The final location and dimension of columns are

While we endeavor to ensure the contents of these plans are correct at the time of printing, the information they contain is to be used as a guide only. Furnishings and floor coverings are for illustrative purposes only, are not shown to scale nor included in the stated price (unless expressly included). The customer should verify all dimensions throughout the building. All areas are provided in accordance with the Method of Measurement for Real Estate Property provided by the Property