



112/349 Northbourne Avenue Lyneham ACT

2  1  1 

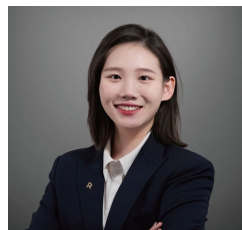
With a light rail connection at the door, Canberra's CBD is just a few minutes away, while the bike path alongside Sullivan's Creek provides a healthy alternative commute. The bars, funky cafes and eating spots of Lyneham, Dickson, O'Connor and Braddon are just minutes away and there's a wide range of sporting facilities practically on your doorstep

Named for one of Canberra's treasured green spaces, The Sullivan provides its own landscaped areas to soothe the eyes and the soul. A residents-only garden with BBQ facilities and Gym area will create a tranquil place to relax or catch up with neighbours.

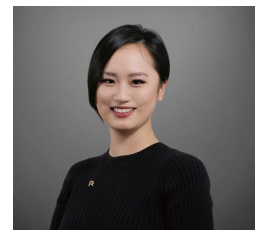
Features:

[For full version visit the website](https://www.ruizproperty.com.au/lease/act/inner-north/lyneham/residential/apartment/7821411)

Type : Apartment
Building Size : 78 sqm
View : <https://www.ruizproperty.com.au/lease/act/inner-north/lyneham/residential/apartment/7821411>



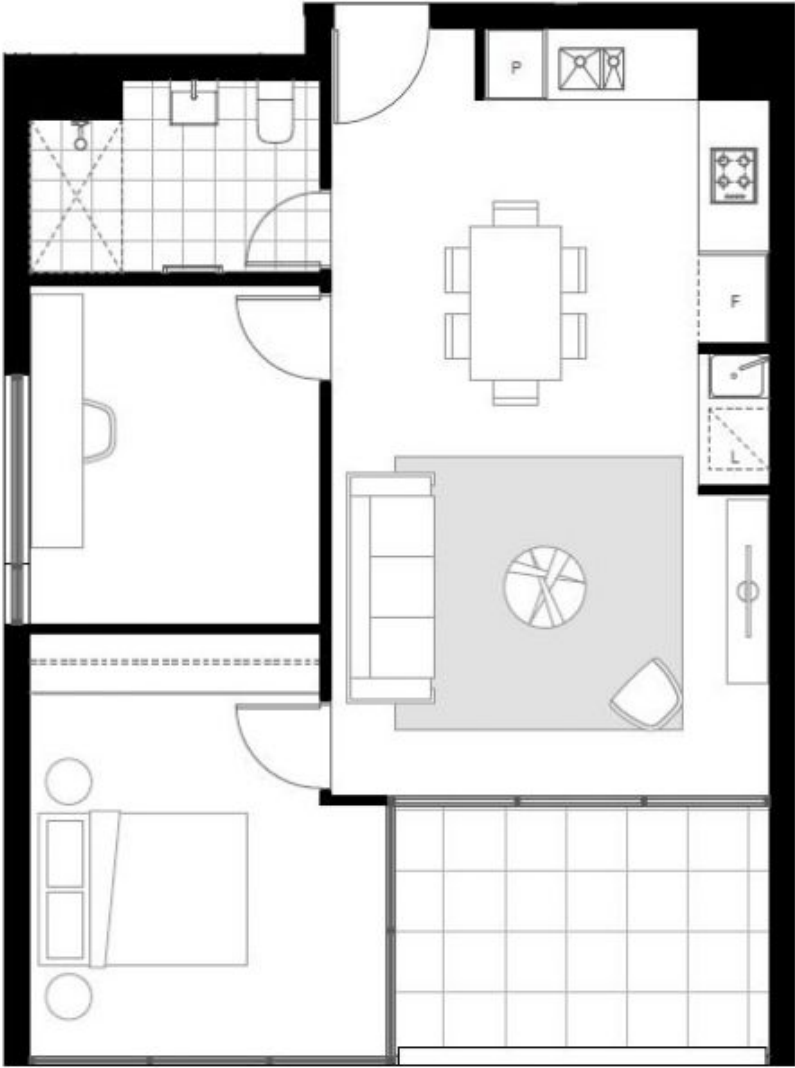
Gloria Luo
02 6109 7667



Kaylee Wang
02 6109 7667

LEGEND
F - Fridge
L - Laundry
S - Storage
P - Pantry

HIGHLIGHT WINDOW



UNIT NUMBER
UNIT NO. 40
Overall total 1

